

FAMILY SUITE (3 Units)

- Two-Bedroom Suite
- Located on the 2nd Level
- Floor Area: 86sqm
- Night Occupancy: 8 Pax*

* All chalet bookings are subjected to the prevailing authorities' guidelines and to any additional premise owners' house rules. For the latest Covid-19 Advisory and updates at CSC @ Changi I: www.csc.sg/covid19

Included Amenities

- 1 King Size Bed & 2 Super Single Beds
- Fully Air-Conditioned with LED TV, Dining Table Set & Sofa Set
- Standing Fridge & Microwave Oven
- Water Dispenser & Nespresso Coffee Machine
- Hair Dryer, Torch Light & Digital Room Safe
- Induction Cooker with Pot and Pan
- Complimentary Beverages - Coffee & Tea (Charges apply for additional beverages requests)
- Toiletries & Bath Amenities (Additional at \$5.00 per set)
- Complimentary Parking for 2 Vehicles (IU registration upon check in)
- Rooftop BBQ Pits (subject to availability):
Off-Peak: \$18 (Member) and \$30 (Non-Member)
Peak & Super Peak: \$28 (Member) and \$50 (Non-Member)

Floor Plan



PERIOD	MEMBERS	PUBLIC OFFICERS	PUBLIC
OFF-PEAK MON-THUR (EXCL. SCH HOLS, EVE & ON P.H.)	\$296.10/night	\$365.40/night	\$433.65/night
PEAK FRI-SUN (EXCL. SCH HOLS), MON-THUR (SCH HOLS)	\$374.00/night	\$452.10/night	\$540.10/night
SUPER-PEAK FRI-SUN (SCHOOL HOLS), EVE & ON PUBLIC HOLS	\$416.85/night	\$520.80/night	\$613.20/night



HCP FAMILY SUITE (1 Unit)

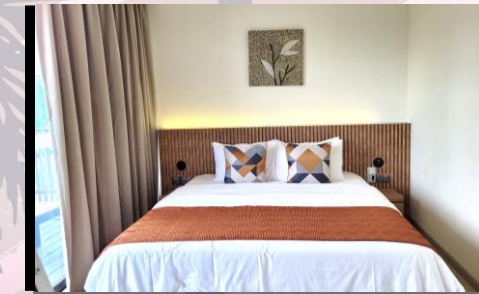
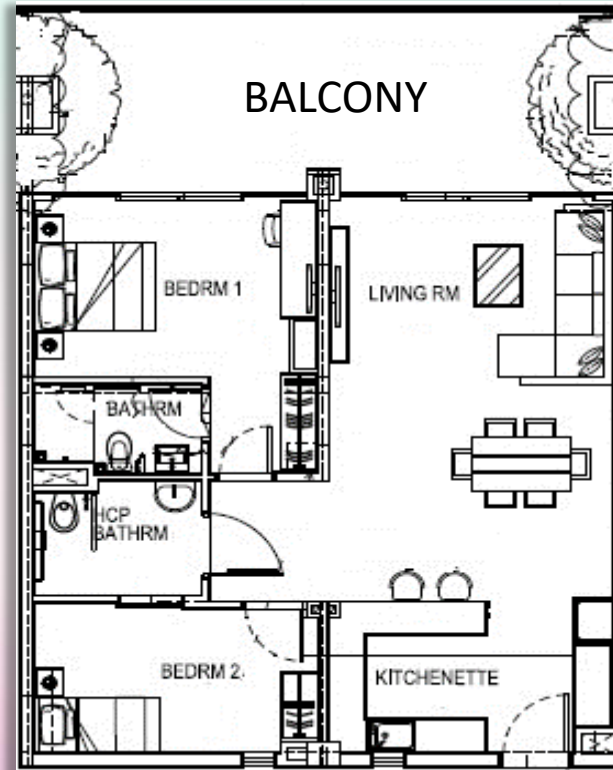
- Two-Bedroom Suite
- Located on the 2nd Level
- Floor Area: 86sqm
- Night Occupancy: 8 Pax*

* All chalet bookings are subjected to the prevailing authorities' guidelines and to any additional premise owners' house rules. For the latest Covid-19 Advisory and updates at CSC @ Changi I: www.csc.sg/covid19

Included Amenities

- 1 King Size Bed, 1 Super Single Bed & 1 Roller Bed
- Full Air-Conditioned with LED TV, Dining Table Set & Sofa Set
- Standing Fridge & Microwave Oven
- Water Dispenser & Nespresso Coffee Machine
- Hair Dryer, Torch Light & Digital Room Safe
- Induction Cooker with Pot and Pan
- HCP-Friendly Bathroom
- Complimentary Beverages - Coffee & Tea (Charges apply for additional beverages requests)
- Toiletries & Bath Amenities (Additional at \$5.00 per set)
- Complimentary Parking for 2 Vehicles (IU registration upon check in)
- Rooftop BBQ Pits (subject to availability):
Off-Peak: \$18 (Member) and \$30 (Non-Member)
Peak & Super Peak: \$28 (Member) and \$50 (Non-Member)

Floor Plan



PERIOD	MEMBERS	PUBLIC OFFICERS	PUBLIC
OFF-PEAK MON-THUR (EXCL. SCH HOLS, EVE & ON P.H.)	\$296.10/night	\$365.40/night	\$433.65/night
PEAK FRI-SUN (EXCL. SCH HOLS), MON-THUR (SCH HOLS)	\$374.00/night	\$452.10/night	\$540.10/night
SUPER-PEAK FRI-SUN (SCHOOL HOLS), EVE & ON PUBLIC HOLS	\$416.85/night	\$520.80/night	\$613.20/night

