

PREMIER VILLA C (1 Unit)

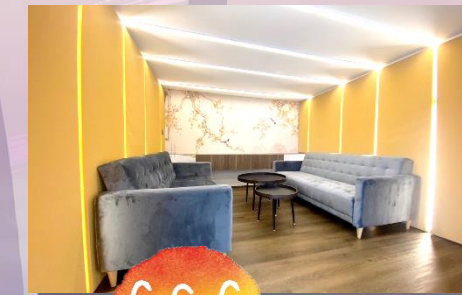
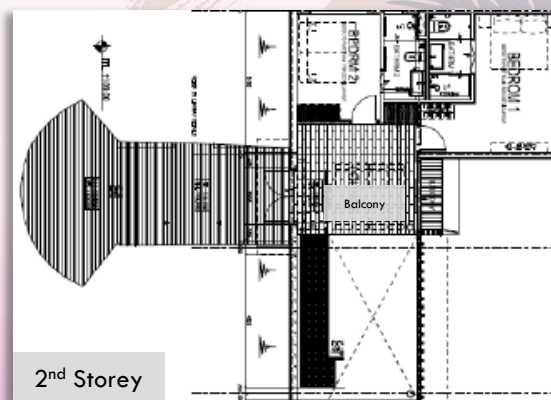
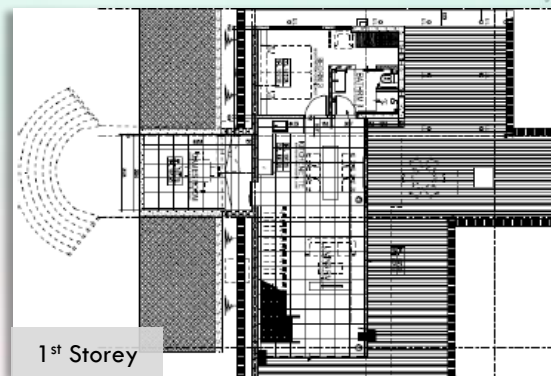
- Sea-Facing
- Three-Bedroom Villa (Two-Storey Villa)
- Floor Area: 130sqm (1st storey)
147sqm (2nd storey) – including balcony
- Night Occupancy: 8 Pax*

* All chalet bookings are subject to the prevailing authorities' guidelines and to any additional premise owners' house rules. For the latest Covid-19 Advisory and updates at CSC @ Changi I: www.csc.sg/covid19

Included Amenities

- 1 King Size Bed & 4 Super Single Beds
- Activity Room
- Fully Air-Conditioned with LED TV, Dining Table Set & Sofa Set
- Standing Fridge & Microwave Oven
- Water Dispenser & Nespresso Coffee Machine
- Hair Dryer, Torch Light & Digital Room Safe
- Induction Cooker with Pot and Pan
- Complimentary Beverages - Coffee & Tea (Charges apply for additional beverages requests)
- Toiletries & Bath Amenities (Additional at \$5.00 per set)
- Complimentary Parking for 3 Vehicles (IU registration upon check in)
- Gas Operated BBQ pit:
Off-Peak: \$18 (Member) and \$30 (Non-Member)
Peak & Super Peak: \$28 (Member) and \$50 (Non-Member)

Floor Plan



PERIOD	MEMBERS	PUBLIC OFFICERS	PUBLIC
OFF-PEAK MON-THUR (EXCL. SCH HOLS, EVE & ON P.H.)	\$550.15/night	\$640.55/night	\$741.98/night
PEAK FRI-SUN (EXCL. SCH HOLS), MON-THUR (SCH HOLS)	\$660.66/night	\$783.09/night	\$910.14/night
SUPER-PEAK FRI-SUN (SCHOOL HOLS), EVE & ON PUBLIC HOLS	\$713.32/night	\$854.44/night	\$995.56/night

