

# SUPERIOR SUITE

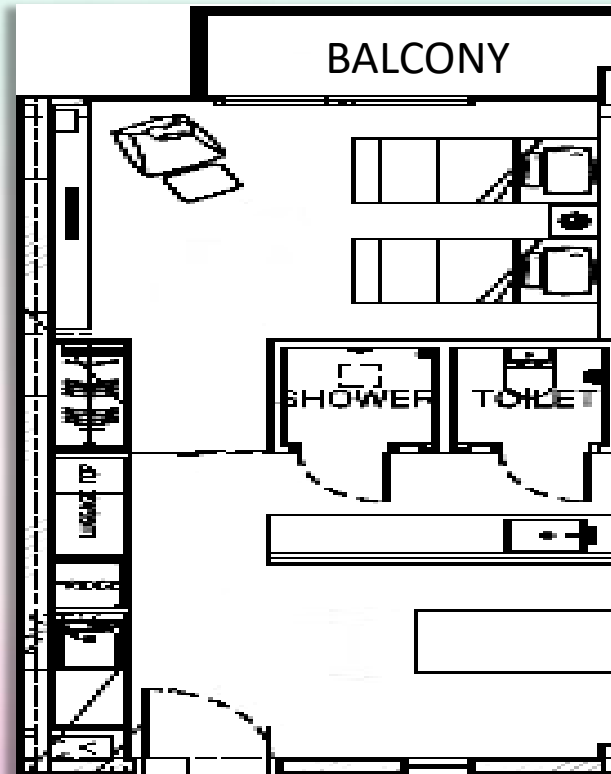
- Single Bedroom Suite
- Located on the 3<sup>rd</sup> & 4<sup>th</sup> Level
- Floor Area: 43sqm
- Night Occupancy: 4 pax\*

\* All chalet bookings are subjected to the prevailing authorities' guidelines and to any additional premise owners' house rules. For the latest Covid-19 Advisory and updates at CSC @ Changi I: [www.csc.sg/covid19](http://www.csc.sg/covid19)

## Included Amenities

- 2 Super Single Beds
- Fully Air-Conditioned with LED TV & Dining Table Set
- Mini Bar Fridge & Microwave Oven
- Water Dispenser & Nespresso Coffee Machine
- Hair Dryer, Torch Light & Digital Room Safe
- Complimentary Beverages - Coffee & Tea (Charges apply for additional beverages requests)
- Toiletries & Bath Amenities (Additional at \$5.00 per set)
- Complimentary Parking for 1 Vehicle (IU registration upon check in)
- Rooftop BBQ Pits (subject to availability):  
Off-Peak: \$18 (Member) and \$30 (Non-Member)  
Peak & Super Peak: \$28 (Member) and \$50 (Non-Member)

## Floor Plan



PERIOD	MEMBERS	PUBLIC OFFICERS	PUBLIC
<b>OFF-PEAK</b> MON-THUR (EXCL. SCH HOLS, EVE & ON P.H.)	\$155.40/night	\$191.10/night	\$236.25/night
<b>PEAK</b> FRI-SUN (EXCL. SCH HOLS), MON-THUR (SCH HOLS)	\$245.30/night	\$305.80/night	\$370.70/night
<b>SUPER-PEAK</b> FRI-SUN (SCHOOL HOLS), EVE & ON PUBLIC HOLS	\$278.25/night	\$348.60/night	\$425.25/night

**CSC**  
AT CHANGI